



4. 4 ASSEMBLY

Considering that the arm is usually installed at a height of more than 2 metres, it is necessary to equip oneself with all the individual protection equipment and devices for works at height.

Service arm can be assembled either by the Technicians authorised by the manufacturer or directly by the customer, following these steps:

Unpacking.

Remove all packing material from the machine, using suitable tools and setting it in a suitable place. Dispose of the packing material according to the prevailing environment protection regulations.

(Visually) **check** machine external parts for damage, carefully ensure that there are no scratches, denting or damaged parts.

Report any fault, failure or missing parts found within five days from machine arrival. Beyond this term the Manufacturer is no longer liable for the machine supplied.

WARNINGS AND PRECAUTIONS for installation

First of all, always ensure that all parts necessary for installation are available. Have **any maintenance intervention** -as per the definition of "user" given in the foreword section- performed by qualified personnel.

Using spare parts that do not comply with the following specifications, any change or tampering (though small as they may be) relieve the Manufacturer of any liability concerning the correct use, operation and safety of persons and/or property. **It is strictly forbidden** to tamper with equipment, control organs and safety devices. **Dispose of waste** as required by the prevailing laws. **If the machine is used by many operators**, all of them shall read the instructions for use and indicate any maintenance intervention or parts replaced, or just suspected faults on the servicing data sheet.

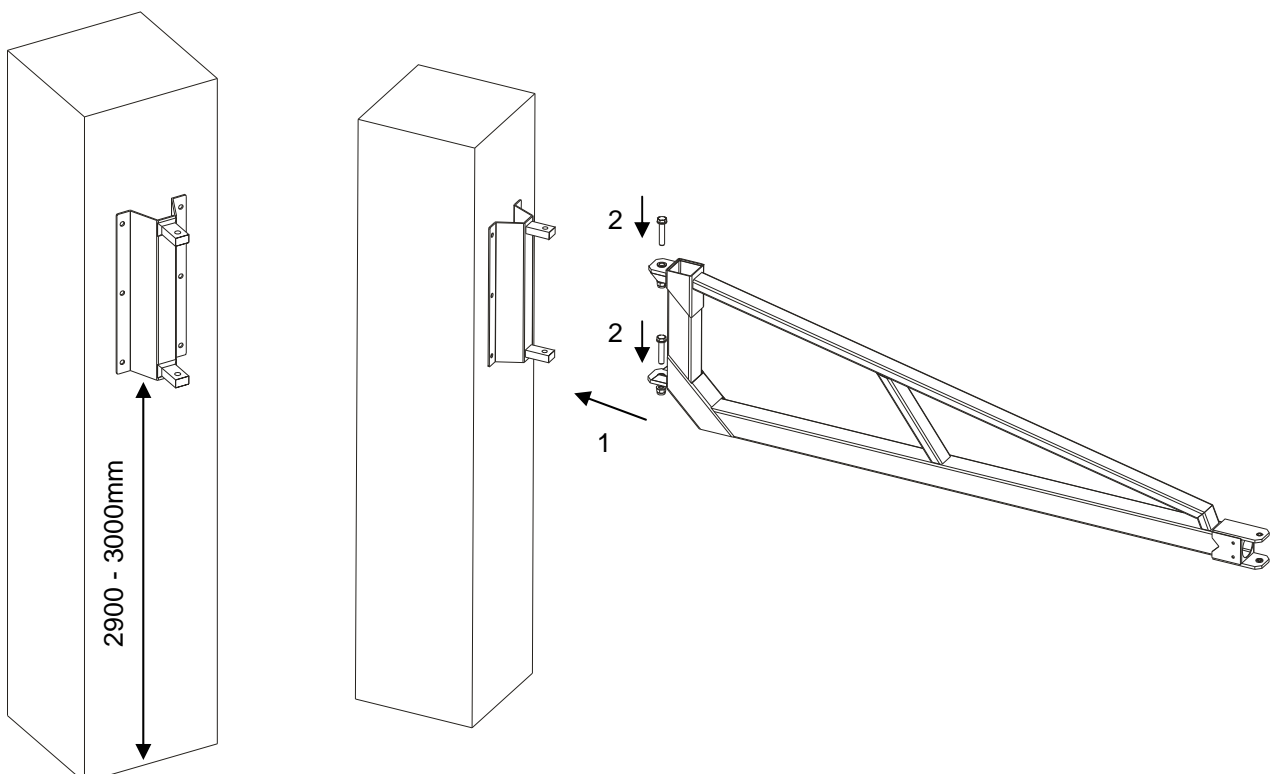
4. 5 SET-UP

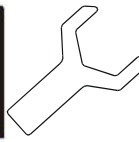
Fasten the service arm to a concrete post (or equivalent support approved by a qualified Technician) by means of the supplied rear hinge.

Set arm framework vertically without removing the fastening that joins the front and rear parts. Use a fork lift to lift the arm until reaching the height of the rear hinge, ensure it is safe and firm, and then fix it using the supplied bolts.

Standard outfit:

- no.6 blocks Hilti HST 12x140;
- no.2 bolts M20x100 with self-locking nuts and washers (M16x100 - 35Bis)





Operations for laying the plate retaining blocks on the wall:

1. Drill a hole $\varnothing 12$.
2. Blow compressed air in the hole to remove dust and residues.
3. Insert the block.
4. Tighten the nut (recommended torque 60Nm).

MSH
equipment

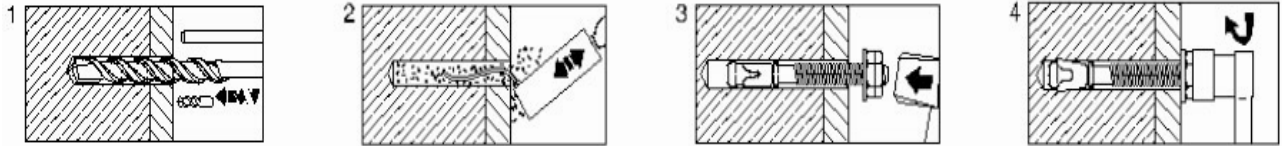


Chart about the stress applied to framework

These values are used for sizing and checking the structure to which arm shall be fixed in case it is impossible to use the supplied blocks*

Model	Maximum stress at the joint cross-section (daN*cm)	Maximum shearing stress for retaining screws (daN)	Maximum normal stress for retaining screws (daN)
35Bis	7321	99	498
35/5	7321	99	498
35/6 - Jolly	9962	123	669
35/7	12334	149	878

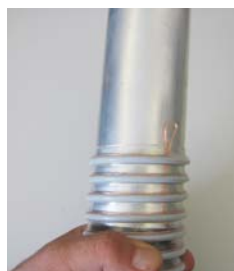
* The supplied block Hilti HST 12x140 is approved for the following conditions:

Concrete class: >25N/sq. mm

Block minimum distance from post edge: >110mm

4. 6 CONNECTIONS

Connect the power and signal cables (2x1 sq. mm). Connect to compressed air supply, installing in-between a gate valve for cut-off and maintenance purposes. Connect the dust suction tube to suction central line. "Peel" the copper wire and fold it inward (if tube is grounded) or connect it to a ground or bonding lead. Connect the arm too to the ground by means of the relevant pre-setting (see figure). With regard to the electrical, pneumatic and control unit suction connections, please look up in the SR service control unit manual.



4. 7 PRELIMINARY INSPECTION

Before starting up the Machine it is necessary to perform some inspections and checks in order to avoid errors or accidents:

- Ensure that the service arm did not suffer any damage during assembly;
- Carefully check cables and air lines for damage and leak;
- Ensure that all mechanical parts are assembled correctly;
- ensure that all mobile parts can move freely.